

# Overt vs Covert Architecture of the Government of the United States

Purpose:

- 1) To depict the overt architecture, which is the one taught in schools and is part of the cultural mythology.
- 2) To depict the covert architecture, the structure of what the architecture is and what methods the oligarchs use to exert control over the people in the government thereby exerting control over the social systems ( legislation, military action, economy, etc. ) and thereby controlling the general population.

Working draft

11/26/2008

Author: Kevin M. Washington

Overview – the architecture that is taught in schools and becomes part of the cultural mythology

## Federal Government

Notice that the military or police do not even show up in this architecture.

Judicial Branch

Executive Branch

Legislative Branch

## State Government

Judicial Branch

Executive Branch

Legislative Branch

## Local Governments

County, Parish, or Borough

Municipality

City

Town

Village

Special District

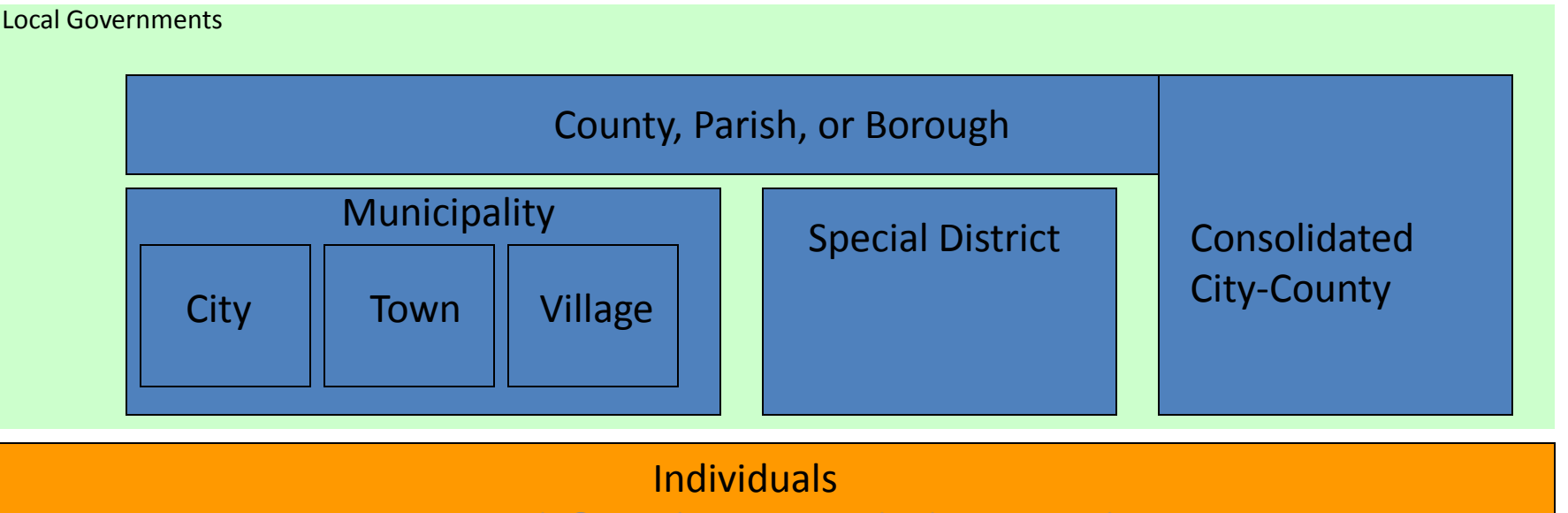
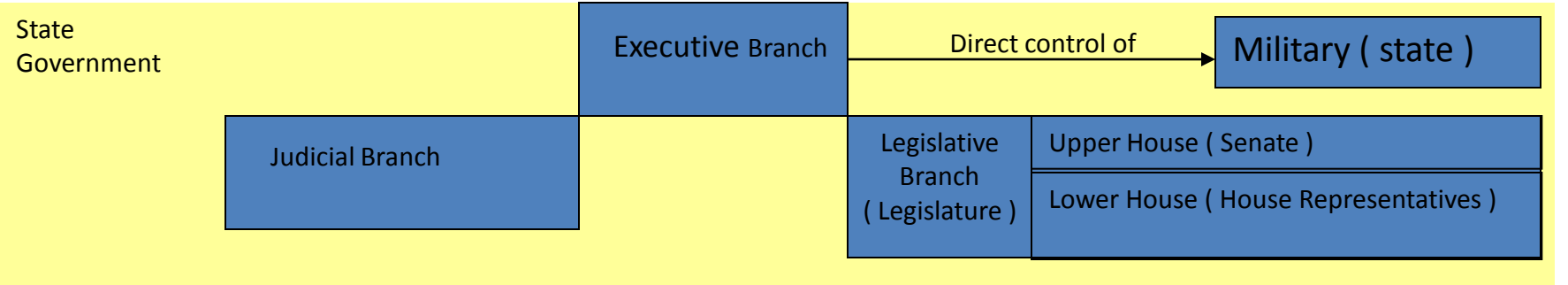
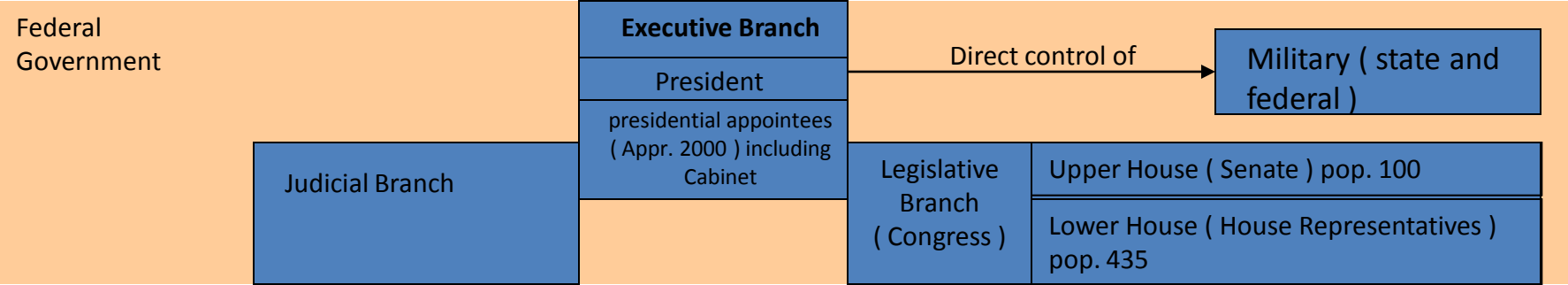
Consolidated City-County

Individuals

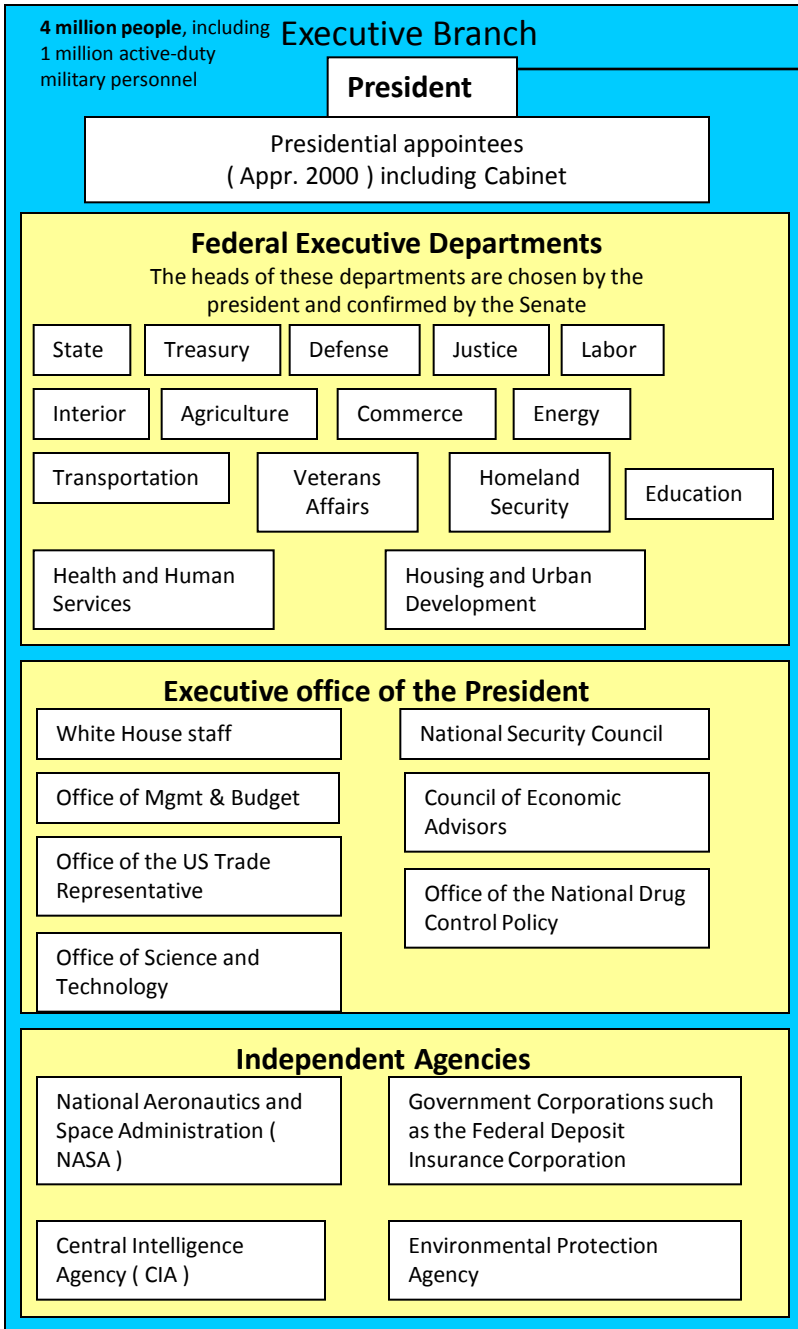


← You are here

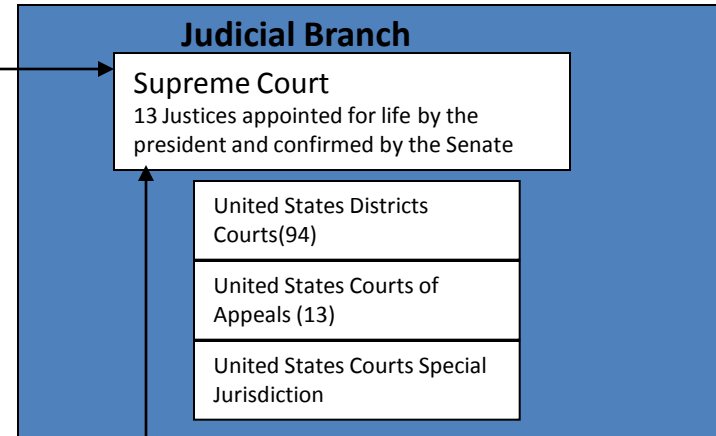
# Overview – the architecture in more detail



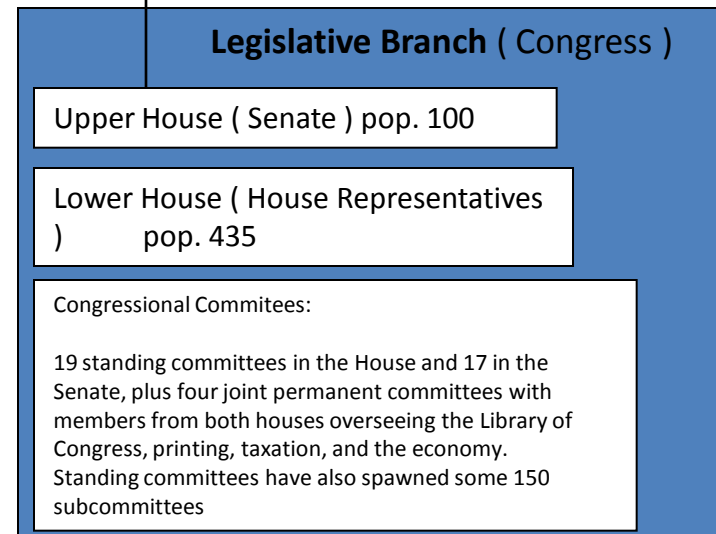
# United States federal government architecture



In-direct control of



In-direct control of



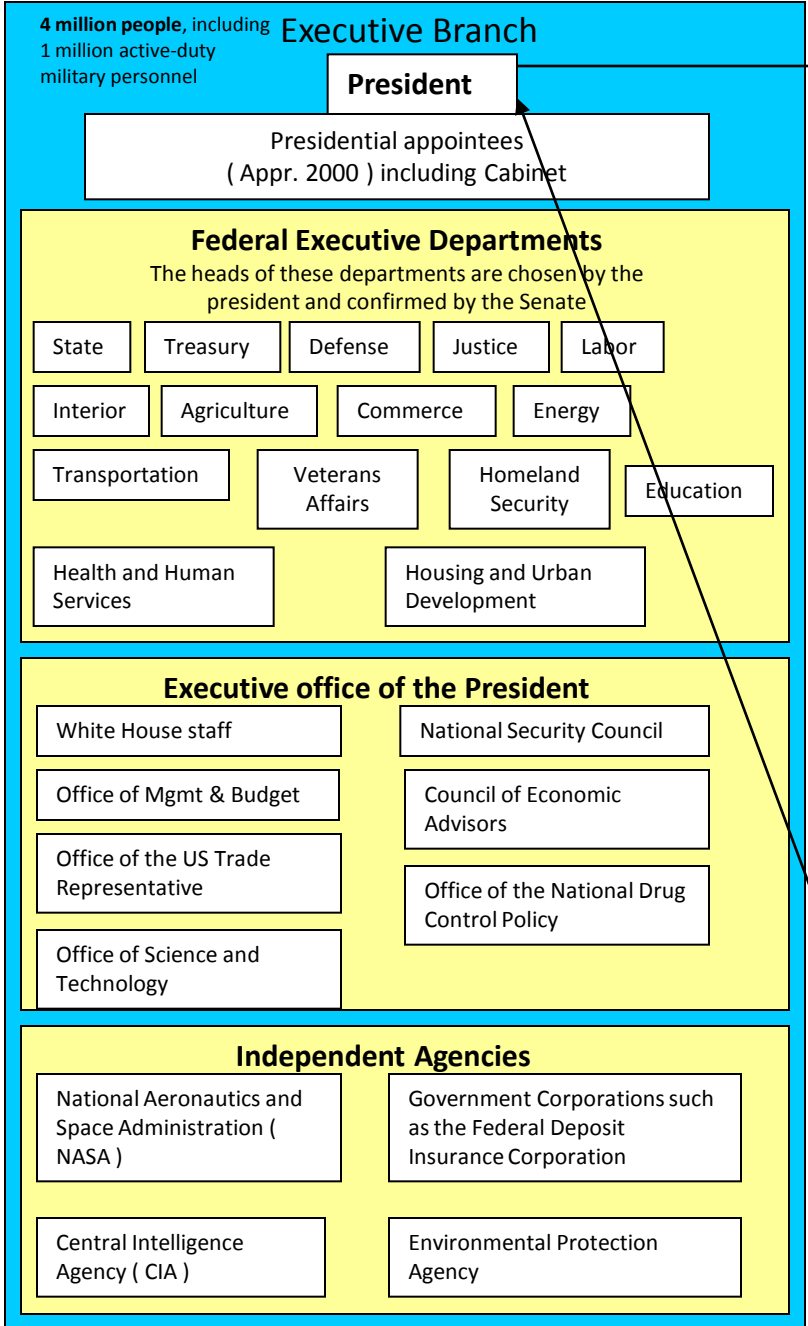
Note: The departments of the executive branch are responsible for executing federal laws and regulations and has the ability to do so i.e. staff, Foundations, funding, etc.

Congress is a legislative body and has no ability to execute federal laws and regulations.

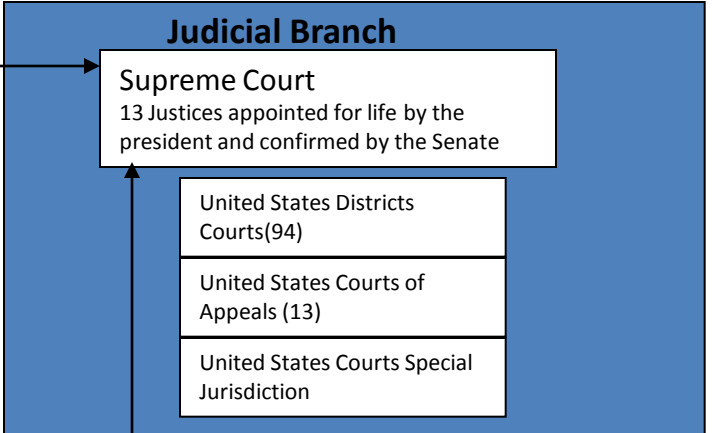
The judicial branch is a judicial body and has no ability to execute federal laws and regulations.

So where does true power reside?

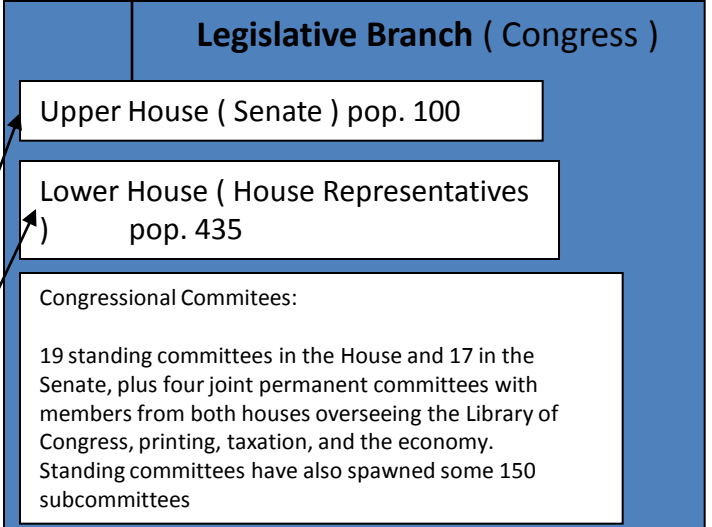
# United States federal government architecture and how the general populace exercises political power



In-direct control of



In-direct control of



In-direct control by periodic voting over a period of years.

You are here



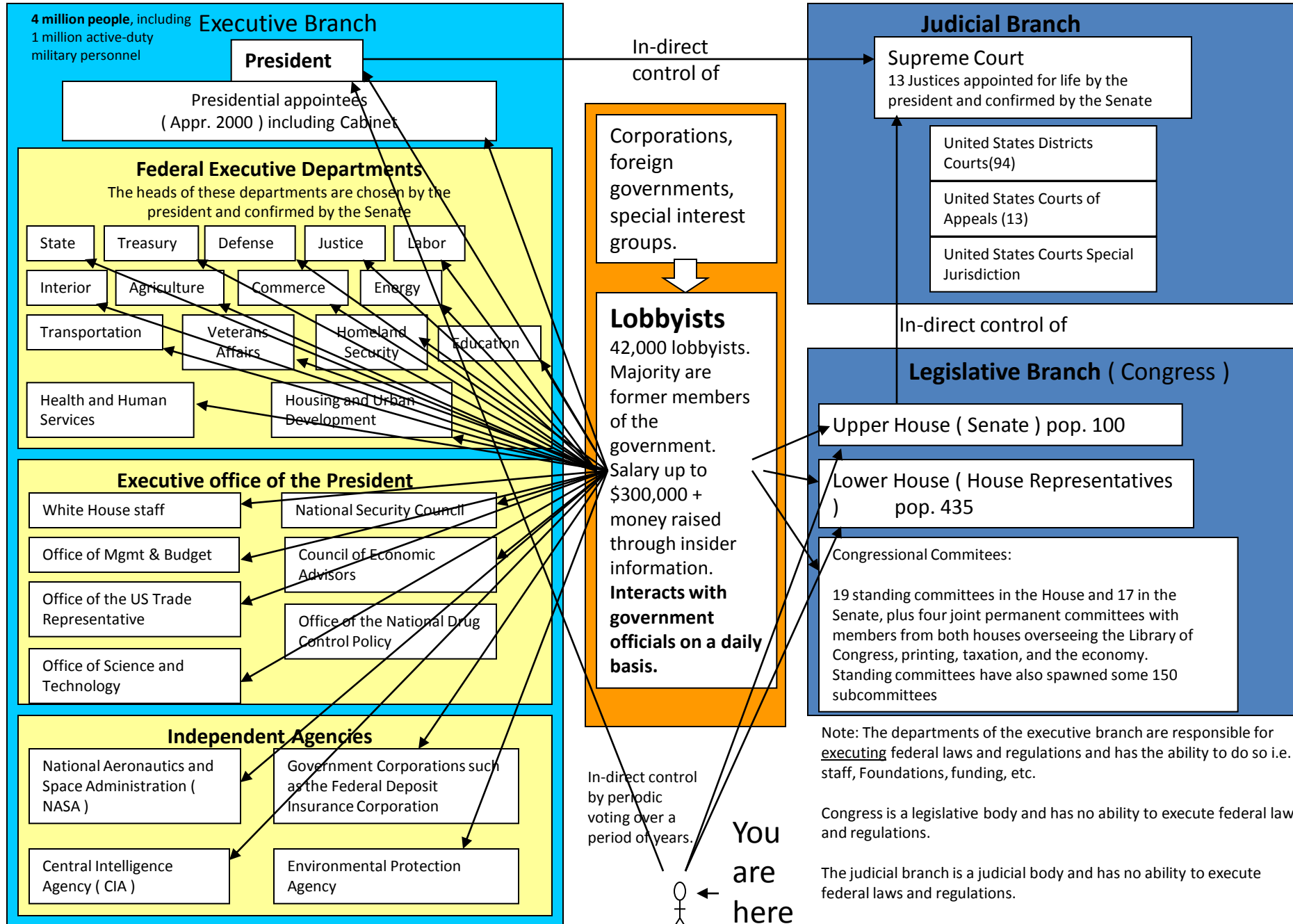
Note: The departments of the executive branch are responsible for executing federal laws and regulations and has the ability to do so i.e. staff, Foundations, funding, etc.

Congress is a legislative body and has no ability to execute federal laws and regulations.

The judicial branch is a judicial body and has no ability to execute federal laws and regulations.

So where does true power reside?

# United States federal government architecture and how the oligarchs use lobbyists to "influence" political power



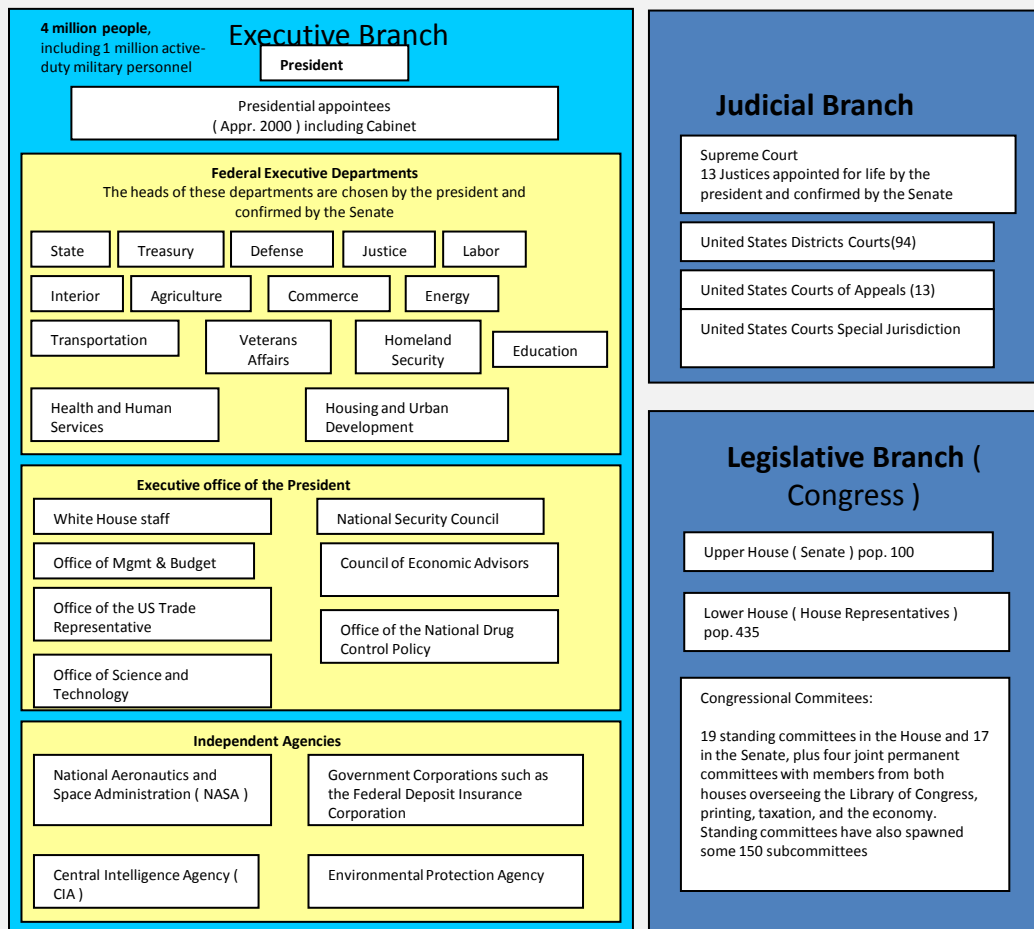
Note: The departments of the executive branch are responsible for executing federal laws and regulations and has the ability to do so i.e. staff, Foundations, funding, etc.

Congress is a legislative body and has no ability to execute federal laws and regulations.

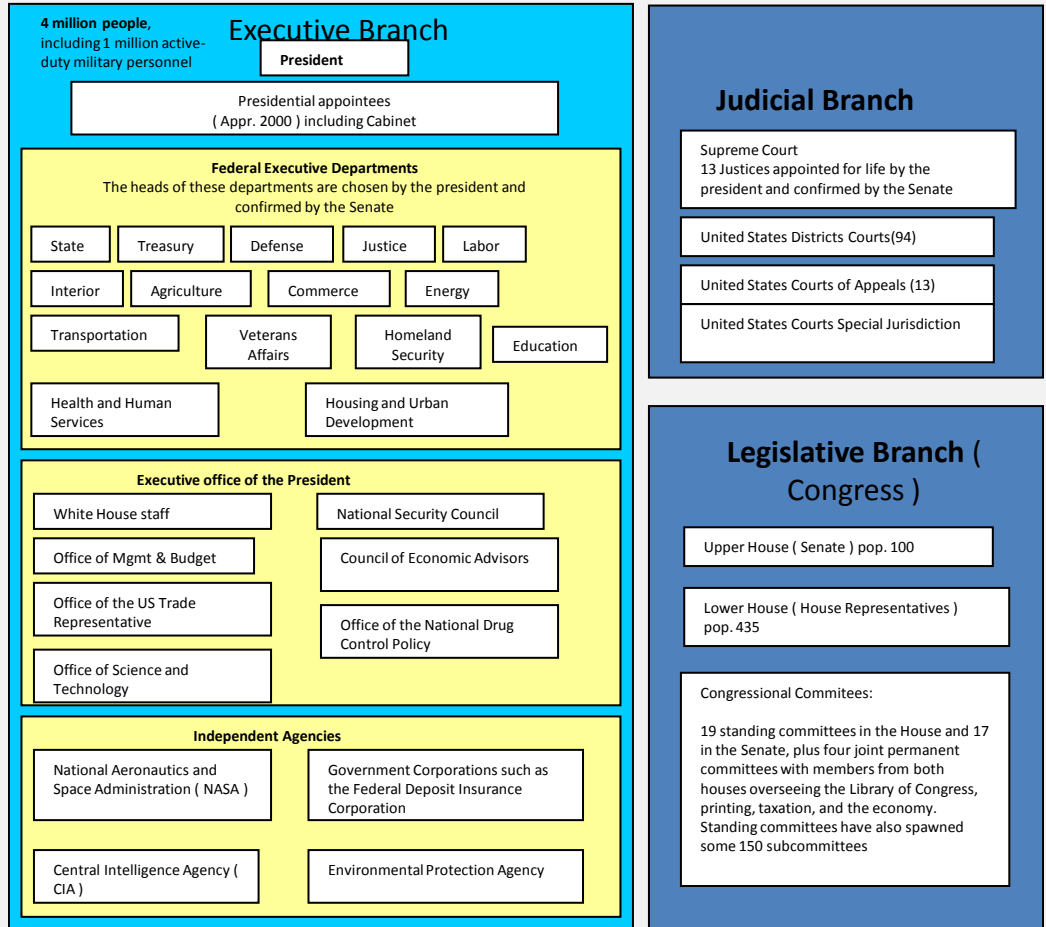
The judicial branch is a judicial body and has no ability to execute federal laws and regulations.

So where does true power reside?


## Overt architecture - what you are taught in school



Overt architecture - what you are taught in school



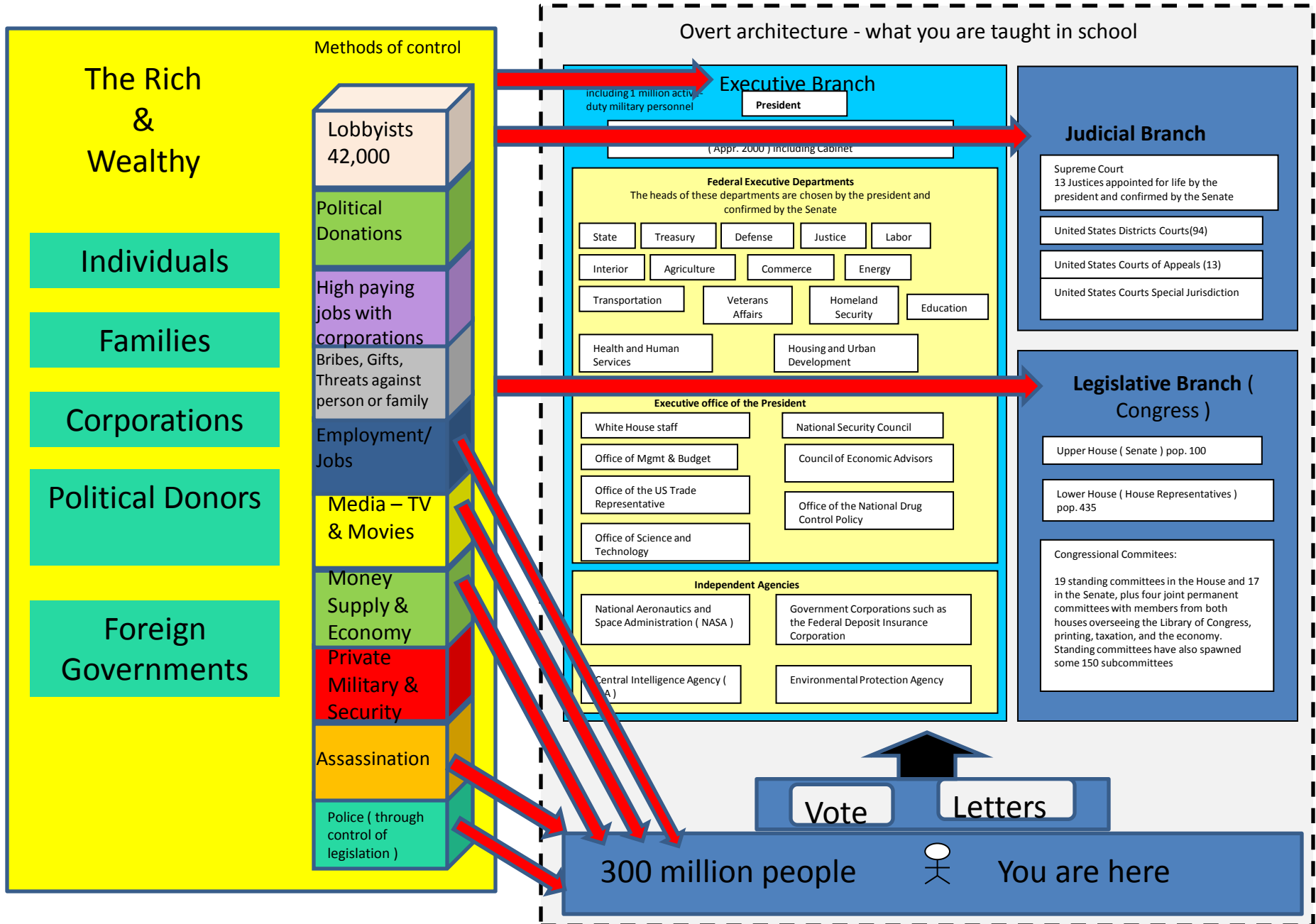
Vote Letters

300 million people  You are here



# Overt or stated architecture vs covert or real architecture

## This is the real architecture of the united states



# Notes on the executive branch

The members of the President's [Cabinet](#) are responsible for administering the various departments of state, including the [Department of Defense](#), the [Justice Department](#), and the [State Department](#). These departments and department heads have considerable regulatory and political power, and it is they who are responsible for executing federal laws and regulations.

The day-to-day enforcement and administration of federal laws is in the hands of the various [federal executive departments](#), created by Congress to deal with specific areas of national and international affairs. The heads of the 15 departments, chosen by the President and approved with the "advice and consent" of the U.S. Senate, form a council of advisors generally known as the President's "Cabinet".

The executive branch is staffed by 4 million people and controls the financial ( Treasury ), energy, transportation, military ( defense), central intelligence agency, justice ( FBI ), commerce, labor, education, state, homeland security, agriculture, interior, health and human services, housing and urban development, veterans affairs, environmental protection, and NASA.

The legislative branch ( Congress ) passes laws, runs committees, and has oversight meetings. Total staff is numbered in the thousands at most.

The judicial branch hears and rules on court cases. Total staff is numbered in the thousands at most.

In terms of actual boots on the ground power, there is no contest. If you control the executive branch, you control the country. Putting pressure on the legislative and judicial branches to control the system is totally feasible with that much power.

# Examples of manipulation of the system.

An **executive order** in the [United States of America](#) is an [edict](#) issued by the [President of the United States](#), the head of the [executive branch](#) of the [United States Government](#). In other countries, similar edicts may be known as [decrees](#), or [orders-in-council](#).

Presidents of the United States have issued executive orders since [1789](#), usually to help direct the operation of executive officers. Some orders do have the force of law when made in pursuance of certain Acts of [Congress of the United States](#), when those acts give the President discretionary powers.

**There is no [United States Constitution](#) provision or statute that explicitly permits this, aside from the vague grant of "executive power" given in [Article II](#), Section 1 of the Constitution and the statement "take Care that the Laws be faithfully executed" in [Article II](#), Section 3.**

**Presidential directives** are a form of [executive order](#) issued by the [President of the United States](#) with the advice and consent of the [National Security Council](#). Because of the nature of presidential directives as pertaining to the [national security](#) of the [United States](#), many presidential directives are promulgated as classified (***which means the general public doesn't even know what they are and cannot find out***). Various presidents since the administration of [John F. Kennedy](#) have issued such directives but under different names.

[George W. Bush](#) issues **National Security Presidential Directives** or NSPDs. After September 11, 2001, he issued **Homeland Security Presidential Directives** or HSPDs, with the consent of the [Homeland Security Council](#). The first such directive created the Homeland Security Council while the second changed [immigration](#) policies to combat [terrorism](#).

On September 20, 2001, in response to the [September 11, 2001 attacks](#), President [George W. Bush](#) announced the establishment of an *Office of Homeland Security (OHS)* to coordinate "homeland security" efforts, to be headed by Governor [Tom Ridge](#) with the title of *Assistant to the President for Homeland Security*.

The **Homeland Security Council** (HSC) is an entity within the [Executive Office of the President of the United States](#) and was created by [Homeland Security Presidential Directive 1](#) (HSPD-1) on October 29, 2001. It serves as the *de facto* successor to the Office of Homeland Security which was established on September 20, 2001, in response to the September 11, 2001, attacks.

Bush creates the Office of Homeland Security, places his own man in control of the office, creates the Homeland Security Council, and then issues **National Security Presidential Directives** with the consent of the [Homeland Security Council](#). Talk about slight of hand.